

An underwater scene with several fish swimming in clear blue water. The fish are of various sizes and are positioned at different depths and angles, creating a sense of movement and natural beauty.

# ozone

technologies ltd

protecting our environment

natural bottled water  
security and simplicity



PO Box 655, Napier, 4110, Hawke's Bay, New Zealand

email: [info@ozonenz.com](mailto:info@ozonenz.com) | office: +64 6 843 2881 | fax: +64 6 843 2441

[www.ozonenz.com](http://www.ozonenz.com)

# state of the art bottled water treatment

Over the past two decades Ozone Technologies have been proactive in our approach to providing turnkey solutions for our partners and clients, and to remain at the leading edge of solution providers, regardless of the industry in question.

## Global demand for water will only increase

One such industry is that of water supply, in particular the strictly legislated provision of bottled water to an international market.

The availability of and access to safe drinking water is one of the most critical natural resource issues facing the world today. Water is the single most important natural resource in the global economy.

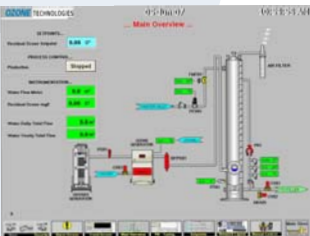
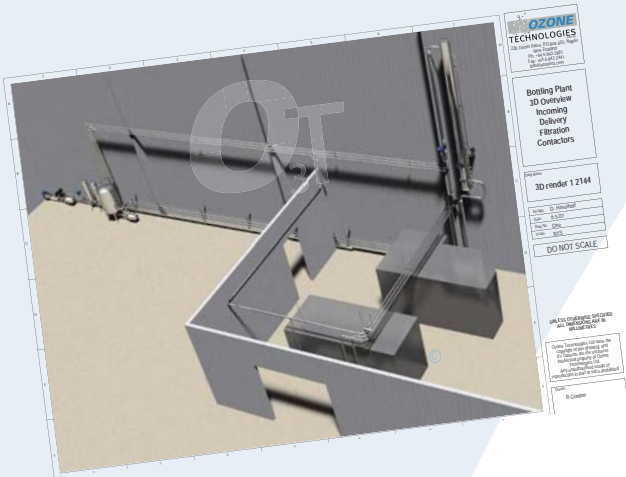
Water is an essential element for the health of any nation; no single type of intervention has greater overall impact upon the national development and public health of a country than does the provision of safe drinking water. In many parts of the world, water is already used faster than natural hydrological process can replenish it. Almost everywhere, water resources are under huge stress from man kind.

Since 1950 the world population has doubled and water use has tripled. The combination of these two trends illustrates the magnitude of the future water demands. Bottled water demand increases to the tune of an almost 30% increase annually, and this is reflected in the rising number of new production facilities being undertaken to meet this demand. This is often undertaken by people with no industry background or understanding of the incredibly complex nature of our most valuable asset, H<sub>2</sub>O.

## O3T development and the pursuit of excellence

Any manufacturer of equipment can sell a component. Off the shelf approaches to water treatment and understanding required handling in each step of the process are rarely successful. We are frequently approached after systems have been installed in an attempt to improve the function of the installed treatment system, which is often a complicated process requiring considerable revision.

Our process engineers and designers have spent considerable time and resources implementing the best possible solution for our clients from the bore to the bottle. Our research is meticulous and we work with some of the best New Zealand and Australian scientists to improve procedures and handling in the interest of providing the most cost-effective solutions to water bottling treatment facilities, compliant to the most stringent international legislations.



Our designers can build a system for your facility from the ground up at conception, and to any degree of process control. Often with a new plant budget's are approached incrementally as funding and sales allow. With this in mind, a system can be designed out with firm foundations and allowances for increases in automation and monitoring in the future.

### O3T Automation, data logging, PID control, process control

All elements of your treatment system can be designed with full automation and process control elements as may be required. This can significantly improve production, hygiene, servicing downtime, monitoring of any variables and enable product tracking from the date and time of production, making quality control simple and providing fully compliant data logging for international supply.

Please discuss your requirements with one of our process designers, we can outline a package suitable for your unique water supply.

### O3T can provide

CAD engineered drafting of plant production equipment, facility layout inclusion, fabrication drawings and P&ID process control documentation as required.

Initial water treatment trials - advice on what to look for from an independent analytical laboratory for initial water quality analysis, and bench trials inhouse in steps to ascertain water quality and suitability for commercial treatment. This is a staged process and will help design your unique water bottling regime to meet your current and future needs for microbial disinfection, removal of undesirable elements, and safeguard your brands consistency.

On-site scaled trials if required

Provision of recommended treatment outlines, and sourcing of equipment to meet these requirements, either direct or through us

Provision and programming of all automation and process control elements

Provision and support for all analytical monitoring equipment the system may require.

We have designed and successfully implemented our technology and solutions for all aspects of water treatment into over fifteen plants in the last decade, and will continue to improve efficiencies in all designs and processes in the future.



## some of our clients:

Coca Cola Amatil, Blue Springs-  
Brands include Pump, Kiwi Blue and Deep  
Springs - accounts for 60% of New Zealand's  
bottled water.

Danone Groupe, Frucor Beverages, Canterbury -  
Brands include H2GO and NZ Natural.

New Zealand Quality Waters -Blue Springs  
brands include Cool Blue, corporate

Living Water Enterprises, Whakatane-  
Formerly Eternal Springs, brands include U  
Water, up to 4 million bottles per month.

Waiwera Infinity, Orewa -  
Brands include Waiwera and SUB

Paradise Valley Spring Water, Rotorua

Pure One Mineral Water, Taranaki

Otakiri Springs -  
Brands include Otakiri Springs and Pheonix

Antipodes Water, Whakatane

AquaSplash, Blue Springs, Putaruru

Deep Waters, Springbank, Canterbury

P&N Beverages, Perth Australia

Coca Cola Pump, Brisbane Australia



ozone technologies ltd

protecting our environment